

# Class and Workshop Schedule January - May



**emerge**

GALLERY &  
ART CENTER

Home of the Pitt County Arts Council

404 Evans Street | Greenville, NC 27858 | (252) 551-6947  
info@emergegallery.com | www.emergegallery.com

## Mission Statement:

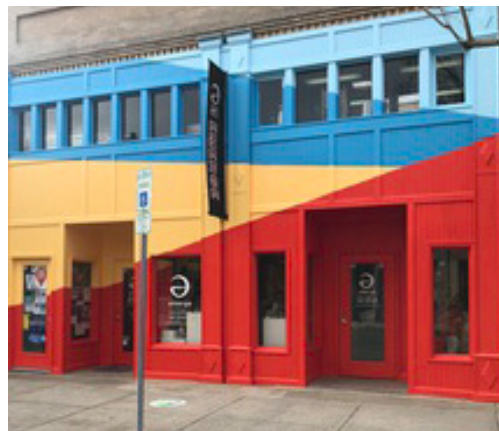
Emerge Gallery & Art Center is a non-profit organization dedicated to enhancing the quality of life in Pitt County by promoting artists and arts organizations, educating through the arts, and making the arts accessible to the entire community.

## Contact Us:

404 Evans Street | Greenville, NC 27858

(252) 551-6947

info@emergegallery.com | www.emergegallery.com



# Community Outreach

Part of the Emerge Gallery & Art Center's mission is to make the arts accessible to the entire community. For every five paid programs, one is completely free. We do this through art programs geared towards those affected by cancer in the hospital, artist in residency programs, and our Youth Arts Initiative program, which includes scholarships and our Youth Public Arts Project.

**Youth Public Arts Project** is our longest running outreach program. Started in 2005, this is a bi-monthly program, where youth come to Emerge Gallery & Art Center to work with professional artists and musicians to create various public art projects and learn about the rich heritage of African American music. The public art is then displayed throughout the community.

**Art is Good Medicine** is an Arts in Healthcare program in partnership with ECU Health and the McConnell-Raab Hope Lodge. Professional visual artists work with adults in the ECU Health Cancer Center, along with the McConnell-Raab Hope Lodge, and pediatric patients in the Maynard Children's Hospital. In addition, we facilitate free adult workshops at the ECU Health Cancer Center.

**Scholarships** are available to our community in need to attend classes free of charge.

Please contact Paula Rountree, Programs Director at [paula@emergegallery.com](mailto:paula@emergegallery.com) for more information.

### General Information

Community Outreach page 2

Policies and Procedures page 3

### Classes and More

Metal Design and Jewelry Classes page 4

Daytime Pottery Classes page 5

Evening Pottery Classes page 6

Bookmaking Classes page 7

Drawing and Painting Classes page 7

Youth Classes page 8

Birthday Party Information page 9

Family Workshops page 10

Sip, Savor, Create page 12

Speciality Workshops page 14

Open Studio Workshops page 15

Private Lessons page 15

Pop In, Pop Art Workshops page 16

Group Activity Information page 17

ArtWalk Workshops page 18

Membership Information page 19

Registration Form page 20





## Registration Procedures

- You must fill out the registration form completely. Register early as space is limited!
- We do not take phone registrations.
- Registration is available via web, mail, or in person at our facility.
- We offer online registration. Please visit [www.emergegallery.com](http://www.emergegallery.com) for more information.
- Registrations may be mailed or delivered in person to:  
Emerge Gallery & Art Center, 404 Evans Street, Greenville, NC 27858
- Mailed registrations will be recorded by date of receipt.
- Payment may be made by check, cash, or credit card.

## Payment and Refund Policies

- Payments must be made in full. Deposits are not accepted.
- All refunds must be requested in writing via mail, in person, or email to [paula@emergegallery.com](mailto:paula@emergegallery.com).
- In the event of any refund EmERGE Gallery & Art Center will retain a \$20 processing fee.
- Full refunds are available up to 14 days prior to a class, minus a processing fee of \$20.
- A partial refund of 50% is available after 14 days up to 7 days prior to class, which includes the processing fee of \$20.
- There will be NO refunds (full or partial) after 7 days prior to a class start date.
- In the case of emergency, sickness, or similar events, please contact Paula Rountree at EmERGE Gallery & Art Center concerning your situation in writing. Each situation is examined on an individual basis. Decisions are made by the Education Committee.
- EmERGE Gallery & Art Center does not offer makeup classes in any form for classes missed due to no fault of our organization. This includes switching classes or sessions.
- Prior to a session beginning, a request to switch a registration from one session to another will incur a \$10-\$20 processing fee, depending on the timeline of your request.

## Class Guidelines and Accessibility

- We encourage you to dress for mess.
- EmERGE Gallery & Art Center asks that if the student is sick or showing signs of becoming sick, that you do not attend class.
- Individuals requesting accommodation under the Americans with Disabilities Act (ADA) should contact the Programs Director at [paula@emergegallery.com](mailto:paula@emergegallery.com) at least two weeks prior to the start of class.
- Most of our studio classrooms are located on our second floor, however we are able to make all of our art opportunities available on the first floor if you are unable to walk upstairs. We ask that a request is made at least two weeks prior to the start of class.

# Metal Design and Jewelry

## Metalsmithing Basics

Create your own unique jewelry with a found object from home or our studio! In this class we will use beginner level stone setting and hand fabrication to create your own jewelry piece. Students are introduced to essential bench tools, workspace, and techniques of a metalsmith or bench jeweler such as sawing, piercing, riveting, texture, and patina. You will learn how to combine several techniques and create a work of art that has meaning to you. No experience needed. [Min. 4, Max. 7]

Ages 16 and up with special permission.

General supplies are included, with the exception of fine metals, however students are welcome to bring additional supplies.

**Tuesdays, 10:00am - 12:00pm**

**Instructor:** Sonya Coulson Rook (Session 1)  
Lisette Fee (Session 2 and 3)

**Session 1: January 13 - February 17 (6 classes)**

**Reg. Code: TMD-19**

**Session 2: March 3 - April 7 (5 classes)**

**Reg. Code: TMD-20**

**\*Skipping the week of March 16 for Daytime Classes**

**Session 3: April 21 - May 26 (6 classes)**

**Reg. Code: TMD-21**

**Cost (Session 1 and 3):** \$110 for Emerge members, \$150 for non-members

**Cost (Session 2):** \$95 for Emerge members, \$135 for non-members

**Thursdays, 6:00pm - 8:30pm**

**Instructor:** Lisette Fee (Session 1 and 3)  
Sonya Coulson Rook (Session 2)

**Session 1: January 15 - February 19 (6 classes)**

**Reg. Code: IMD-19**

**Session 2: March 5 - April 9 (6 classes)**

**Reg. Code: IMD-20**

**Session 3: April 23 - May 28 (6 classes)**

**Reg. Code: IMD-21**

**Cost:** \$130 for Emerge members, \$170 for non-members

## Open Studio for Metals

As a benefit of enrollment in our metals program, current students are able to come in and work during our open studio hours currently scheduled for Wednesday evenings from 6:30pm until 8:30pm.

Additional details will be discussed on the first night of class.



**Are you an Emerge Student?**

**Become a Member of Emerge!**

Benefits include discounts on classes and workshops.

*Student/Senior • Individual • Family • Donor • Sponsor • Patron • Benefactor*



# Daytime Pottery Classes

**Supply Fees:** \$25 per bag of clay (covers glazes and firing) and \$20 Pottery Tool Kit (includes bucket, large sponge for cleaning, wooden and metal rib, wire tool, needle tool, double end loop and large loop trimming tool, modeling tool, and sponge)

## Potter's Wheel

This is the perfect class for those interested in learning and perfecting throwing on the potter's wheel. Intermediate and advanced students will work with the instructor on problem solving and refining their skills. This is the perfect class for those interested in learning and perfecting throwing on the potter's wheel. Intermediate and advanced students will work with the instructor on problem solving and refining their skills. Advanced skills such as increasing scale, pulling spouts, and attaching handles will be addressed to challenge potters who have more wheel experience. Intro to Wheel Throwing is a prerequisite to this class. [Min. 4, Max. 8] Ages 16 and up with special permission.

**Tuesdays, 1:00pm - 3:00pm**

**Session 1: January 13 - February 17 (6 classes)**

**Session 2: March 3 - April 7 (5 classes)**

**\*Skipping the week of March 16 for Daytime Classes**

**Session 3: April 21 - May 26 (6 classes)**

**Instructor:** Melissa Gates

**Reg. Code:** DPW-19

**Reg. Code:** DPW-20

**Reg. Code:** DPW-21

**Cost (Session 1 and 3):** \$90 for Emerge members, \$130 for non-members

**Cost (Session 2):** \$75 for Emerge members, \$115 for non-members



## Handbuilding

In this class you will cover the fundamentals necessary for handbuilding such as rolling slabs and coils, using an extruder, and learn how your hands make great tools. In addition, glazing techniques and surface decoration will be covered. Students will learn how to make various seasonal projects, all of which make great handmade gifts for friends and family. [Min. 4, Max. 8] Ages 16 and up with special permission.

**Thursdays, 1:00pm - 3:00pm**

**Session 1: January 15 - February 19 (6 classes)**

**Session 2: March 5 - April 9 (5 classes)**

**\*Skipping the week of March 16 for Daytime Classes**

**Session 3: April 23 - May 28 (6 classes)**

**Instructor:** Gail Ritzer

**Reg. Code:** THB-19

**Reg. Code:** THB-20

**Reg. Code:** THB-21

**Cost (Session 1 and 3):** \$90 for Emerge members, \$130 for non-members

**Cost (Session 2):** \$75 for Emerge members, \$115 for non-members



## Intro to Wheel Throwing

If you've never tried the potter's wheel but have always wanted to, then this class is for you. If you've thrown on the wheel before but need a refresher or are new to Emerge, then this class is for you too! During this introductory class, you will learn the fundamentals necessary for throwing cylinders and bowls. The session will focus on techniques for centering, opening, pulling, trimming, and glazing. Class size is restricted so students can get the technical instruction required to establish a good foundation for continued learning. This class is a prerequisite for continuing pottery classes. [Min. 4, Max. 6] Ages 16 and up with special permission.

**Fridays, 1:00pm - 3:00pm**

**Session 1: January 16 - February 20 (6 classes)**

**Session 2: March 6 - April 10 (5 classes)**

**\*Skipping the week of March 16 for Daytime Classes**

**Session 3: April 24 - May 29 (6 classes)**

**Instructor:** Erica Tuomi (Session 1 and 2)  
Norah Harbold (Session 3)

**Reg. Code:** DWT-19

**Reg. Code:** DWT-20

**Reg. Code:** DWT-21

**Cost (Session 1 and 3):** \$100 for Emerge members, \$140 for non-members

**Cost (Session 2):** \$85 for Emerge members, \$125 for non-members





# Evening Pottery Classes

**Supply Fees:** \$25 per bag of clay (covers glazes and firing) and \$20 Pottery Tool Kit (includes bucket, large sponge for cleaning, wooden and metal rib, wire tool, needle tool, double end loop and large loop trimming tool, modeling tool, and sponge)

## Handbuilding: To Function, or Not to Function?

This class will focus on introducing handbuilding techniques including slab building, coiling, and pinch pots. You can use these techniques to make something sculptural or something functional to take home. This is a project-based class, therefore a demonstration will be given at the beginning of each class. Some previous experience with clay is preferred but not necessary. [Min. 4, Max. 8] Ages 16 and up with special permission.

**Tuesdays, 6:00pm - 8:30pm**

**Instructor:** Haley McElroy (Session 1 and 3)  
Charlotte Fitz-Daniels (Session 2)

**Session 1: January 13 - February 17 (6 classes)**

**Reg. Code: ACT-19**

**Session 2: March 3 - April 7 (6 classes)**

**Reg. Code: ACT-20**

**Session 3: April 21 - May 26 (6 classes)**

**Reg. Code: ACT-21**

**Cost:** \$100 for Emerge members, \$140 for non-members



## Intro to Wheel Throwing

During this introductory class you will learn the fundamentals necessary for throwing including the techniques for centering, opening, pulling, trimming, and glazing. If you've never tried the potter's wheel but have always wanted to, then this class is for you. If you've thrown on the wheel before but need a refresher or are new to Emerge, then this class is for you too! Class size is restricted so students can get the technical instruction required to establish a good foundation for continued learning. A lesson and demonstration will be given at the beginning of each class. This class is a prerequisite for continuing pottery classes. [Min. 4, Max. 6] Ages 16 and up with special permission.

**Wednesdays, 6:00pm - 8:30pm**

**Instructor:** Kia Glosson (Session 1 and 3)  
Norah Harbold (Session 2)

**Session 1: January 14 - February 18 (6 classes)**

**Reg. Code: IWT-19**

**Session 2: March 4 - April 8 (6 classes)**

**Reg. Code: IWT-20**

**Session 3: April 22 - May 27 (6 classes)**

**Reg. Code: IWT-21**

**Cost:** \$110 for Emerge members, \$150 for non-members



## Continuing Potter: Beyond the Basics

Continuing students will hone their skills at centering, opening, and pulling during this class. Projects are designed to help improve the fundamentals necessary for crafting advanced forms. Each project will include glazing and surface decoration discussions. This class is project driven and will allow students to take home several functional pieces! Introduction to Wheel Throwing is a prerequisite to this class. [Min. 4, Max. 8] Ages 16 and up with special permission.

**Thursdays, 6:00pm - 8:30pm**

**Instructor:** Melissa Gates (Session 1)  
Caroline Koerner (Session 2 and 3)

**Session 1: January 15 - February 19 (6 classes)**

**Reg. Code: CPW-19**

**Session 2: March 5 - April 9 (6 classes)**

**Reg. Code: CPW-20**

**Session 3: April 23 - May 28 (6 classes)**

**Reg. Code: CPW-21**

**Cost:** \$100 for Emerge members, \$140 for non-members



# Bookmaking

## Intro to Bookmaking

This course will cover a variety of basic techniques including sewn bindings, folded structures, and using adhesives. Participants will construct both hard cover and soft cover books, books for journaling and sketching, as well as artist books. Tools and some materials provided. No experience needed. [Min. 4, Max. 12]

Ages 16 and up with special permission.

General supplies are included, however students are welcome to bring additional supplies.

**Wednesdays, 6:00pm - 8:30pm**

**Instructor:** Joanne Lang

**Session 1: January 14 - February 18 (6 classes)**

**Reg. Code:** ITB-19

**Cost:** \$100 for Emerge members, \$140 for non-members



# Drawing and Painting

## Intro to Painting, Drawing and Mixed Media

Do you want to learn to paint or draw? Are you interested in working with mixed media? Would you like to perfect your skills? If so, sign up for this fun class! This open studio style class offers fellowship with other artists interested in painting, drawing, and mixed media while collaborating together on great new project ideas. [Min. 4, Max. 12]

Ages 16 and up with special permission.

First day supplies are included. The instructor will provide a supply list at the first class.

**Tuesdays, 1:00pm - 3:00pm**

**Instructor:** Gail Ritzer

**Session 1: January 13 - February 17 (6 classes)**

**Reg. Code:** PDM-19

**Session 2: March 3 - April 7 (5 classes)**

**Reg. Code:** PDM-20

**\*Skipping the week of March 16 for Daytime Classes**

**Session 3: April 21 - May 26 (6 classes)**

**Reg. Code:** PDM-21

**Cost (Session 1 and 3):** \$90 for Emerge members, \$130 for non-members

**Cost (Session 2):** \$75 for Emerge members, \$115 for non-members



## Drawing and Painting

Whether it is watercolor, acrylic, oils, charcoal, or graphite that strikes your fancy, we have the class for you! Our classes are small and taught like several private lessons at once, geared towards your specific interests and subject matter choices. You will learn just as much from your classmates as you will from your instructor with an open studio feel. Our class structure is great for beginners or experienced painters and drawers to further their skills! [Min. 4, Max. 12]

Ages 16 and up with special permission.

First day supplies are included. The instructor will provide a supply list at the first class.

**Thursdays, 6:00pm - 8:30pm**

**Instructor:** Kas Eastwood (Session 1 and 2)

Paula "PJ" Jordan-Mayo (Session 3)

**Session 1: January 15 - February 19 (6 classes)**

**Reg. Code:** PAO-19

**Session 2: March 5 - April 9 (6 classes)**

**Reg. Code:** PAO-20

**Session 3: April 23 - May 28 (6 classes)**

**Reg. Code:** PAO-21

**Cost:** \$100 for Emerge members, \$140 for non-members



# Youth Classes

## Metalsmithing Basics

### Grade 6 and up

Create your own unique jewelry with a found object from home or our studio! In this class we will use beginner level stone setting and hand fabrication to create your own jewelry piece. Students are introduced to essential bench tools, workspace, and techniques of a metalsmith or bench jeweler such as sawing, piercing, riveting, texture, and patina. You will learn how to combine several techniques and create a work of art that has meaning to you. All materials included. [Min. 4, Max. 7]

**Tuesdays, 6:00pm - 8:00pm**

**Instructor:** Sonya Coulson Rook

**Session 1: January 13 - January 27 (3 classes)**

**Reg. Code:** AMD-19

**Session 2: March 3 - March 17 (3 classes)**

**Reg. Code:** AMD-20

**Cost:** \$60 for Emerge members, \$100 for non-members

**Sibling Discount:** \$5 off after the first child



## Drawing and Painting

### Grade 6 and up

Whether it is watercolor, acrylic, color pencils, charcoal, or graphite that strikes your fancy, we have the class for you! During this class we will dive into the different areas of painting and drawing, while completing one of a kind pieces of art. Our class structure is great for beginners or experienced painters and drawers to further their skills! No experience needed. All materials included. [Min. 4, Max. 12]

**Wednesdays, 6:00pm - 8:00pm**

**Instructor:** Kaitlyn O'Connell (Session 1 and 3)

TBA (Session 2)

**Session 1: January 14 - February 18 (6 classes)**

**Reg. Code:** PAD-19

**Session 2: March 4 - April 8 (6 classes)**

**Reg. Code:** PAD-20

**Session 3: April 22 - May 27 (6 classes)**

**Reg. Code:** PAD-21

**Cost:** \$100 for Emerge members, \$140 for non-members

**Sibling Discount:** \$5 off after the first child



## Mixed Media Madness

### Grade 1 - 5

Are your young artists interested in exploring the wide world of art? Then this class is for them! Students will be exposed to a wide variety of mediums while creating works of art. Students will get to explore drawing, painting, printmaking, mixed media, handbuilding with clay, and much more! All materials included. [Min. 4, Max. 12]

**Wednesdays, 6:00pm - 8:00pm**

**Instructor:** Kas Eastwood (Session 1)

Alex Chisler (Session 2 and 3)

**Session 1: January 14 - February 18 (6 classes)**

**Reg. Code:** AF-19

**Session 2: March 4 - April 8 (6 classes)**

**Reg. Code:** AF-20

**Session 3: April 22 - May 27 (6 classes)**

**Reg. Code:** AF-21

**Cost:** \$100 for Emerge members, \$140 for non-members

**Sibling Discount:** \$5 off after the first child





# Dress for a Mess!

and celebrate your next birthday  
with an art party at Emerge!



**Emerge Gallery & Art Center has an exciting way to celebrate  
your child's special day, from toddlers to teenagers!**

Activities include but are not limited to:  
Potters Wheel, Canvas Paintings, Metal Design  
and More!

Questions?

Contact Paula Rountree, Programs Director  
at (252) 551-6947 or [paula@emergegallery.com](mailto:paula@emergegallery.com)

Emerge Gallery & Art Center  
404 Evans Street Greenville, NC 27858  
[www.emergegallery.com](http://www.emergegallery.com)

# Family Workshops

Spend a little quality time with the ones you love by creating something together! This monthly series invites families to create art side by side in a different medium each month! Our two-hour workshops provide a fun and rewarding time for parents, grandparents, or older siblings to work with a young person while exploring new materials and creating a project together or separately.

**Cost:** \$20 per person for Emerge members, \$30 per person for non-members  
(must sign up at least 1 adult, 1 child)  
\*Discount of \$10 off for the third enrollment in a household.

## Potter's Wheel

**Ages 3 and up**

Participants will learn the basics of working on the potter's wheel. They will learn to center and pull the clay to make a simple form. Participants will choose one or two of their best attempts to keep, and return to pick up their pots after they have been glaze fired by our staff. [Min. 4, Max. 10]

**Date:** Sunday, January 25  
**Instructor:** Norah Harbold  
**Time:** 1:30pm – 3:30pm  
**Reg. Code:** FWS-21



## Friendship Copper Bracelets

**Ages 7 and up**

Participants will venture into our Metals Studio and learn different stamping and texture techniques to imprint a piece of copper. Then you will learn how to file, sand, and shape your metal strips into a wearable cuff. Your art makes for a great gift or keepsake. [Min. 4, Max. 8]

**Date:** Sunday, February 15  
**Instructor:** Sonya Coulson Rook  
**Time:** 1:30pm – 3:30pm  
**Reg. Code:** FWS-22



## Cyanotype Shirts

**Ages 7 and up**

Cyanotype is an old photographic printing process that produces a blue-toned blueprint onto a surface. It works by coating a surface with a chemical solution and exposing it to UV light, such as sunlight, with an object or negative on top. We will be choosing found objects to lay onto a white shirt creating a unique image. We will be asking for your shirt sizes during registration. [Min. 4, Max. 12]

**Date:** Sunday, March 22  
**Instructor:** Ashley Cagle  
**Time:** 1:30pm – 3:30pm  
**Reg. Code:** FWS-23





## Beaded Fish Keychain

**Ages 7 and up**

Our instructor will help you navigate a fish design we have provided for you to weave a small fish of seed beads and metal wire. We will cover a few basic techniques and you can choose from several different colored beads to customize your fish colors. You will then attach your fish to a keychain. [Min. 4, Max. 8]

**Date: Sunday, April 26**

**Instructor: Jacque Schacht**

**Time: 1:30pm – 3:30pm**

**Reg. Code: FWS-24**



## Dinosaur Planter

**Ages 3 and up**

Family members will be making dinosaur themed planters out of clay using several handbuilding techniques. Please bring your imagination full of long necks, spiked tails, and spotted legs! After construction, projects will be painted with underglaze during the workshop, fired by our staff, and ready for pick up a few weeks later. [Min. 4, Max. 12]

**Date: Saturday, May 17**

**Instructor: Jacque Schacht**

**Time: 1:30pm – 3:30pm**

**Reg. Code: FWS-25**



---

# Save the Date



March 16 – 20, 2026

April 6 – 10, 2026

Registrations are open now!



June 1 – August 14, 2026  
Schedule released in February!



# Sip, Savor, & Create

Make plans to join us for one or more of our Sip, Savor, and Create Workshops that uses artistic fun as a great excuse to have a night out. Grab your friends and join us for a wonderful art project while enjoying your favorite beverage. No experience is necessary, but a willingness to have fun is! All supplies are included. Please feel free to bring a beverage of your choice.

This is an adult workshop series, and recommended for ages 18+ and up! Anyone under the age of 18, MUST be accompanied by an adult! Youth under the age of 16 are not admitted into adult workshops.

We provide:

1. All the art supplies
2. A great art instructor

You need to bring:

1. You!
2. Friends!
3. Your Favorite Beverage

(Beer and white wine are welcome. No liquor please.)

**Cost:** \$40 for Emerge members, \$60 for non-members

\*Discount of \$10 off for the second enrollment of Emerge members in the same household.

## Encaustic Painting

Encaustic painting involves using heated beeswax mixed with colored pigments and then painting with it. This style of hot wax painting can be built up in relief layers and the wax gives a rich optical effect to the pigment. Everyone will walk home with an ancient Greek style painting and a new experience to go along with it. [Min. 4, Max. 8]

**Date:** Friday, January 23

**Time:** 6:30pm – 8:30pm

**Instructor:** Ashley Cagle

**Reg. Code:** WND – 20



## Salt Water Etching

Using salt water and an old car battery, discover a family and pet safe way to etch copper, brass, and nickel in your own home. In this class you will explore making different patterns using multiple resists. Enjoy creating texture plates which can be used in a wide variety of projects, including but not limited to jewelry! [Min. 4, Max. 8]

**Date:** Friday, February 13

**Time:** 6:30pm - 8:30pm

**Instructor:** Sonya Coulson Rook

**Reg. Code:** WND – 21



## Potter's Wheel

Come visit our studio to center clay and help center yourself! It's been a tough week, so treat yourself to have a creative release while enjoying date night with a friend or significant other at Emerge. This is a great opportunity to try out the potter's wheel and maybe find a new hobby you will enjoy. [Min. 4, Max. 10]

**Date:** Friday, March 20

**Time:** 6:30pm - 8:30pm

**Instructor:** Norah Harbold

**Reg. Code:** WND – 22



## Encaustic Painting

Encaustic painting involves using heated beeswax mixed with colored pigments and then painting with it. This style of hot wax painting can be built up in relief layers and the wax gives a rich optical effect to the pigment. Everyone will walk home with an ancient Greek style painting and a new experience to go along with it. [Min. 4, Max. 8]

**Date:** Friday, April 17

**Time:** 6:30pm - 8:30pm

**Instructor:** Ashley Cagle

**Reg. Code:** WND – 23



## Printmaking Citrus Tea Towels

Learn how to make colorful textile art while having fun with this fast and easy hand printing method. We will press freshly cut citrus into paint and then print their image onto a tea towel. For a lasting and washable design, acrylic paint will be mixed with a fabric medium, then heat-set the finished print. [Min. 4, Max. 8]

**Date:** Friday, May 22

**Time:** 6:30pm - 8:30pm

**Instructor:** Alex Chisler

**Reg. Code:** WND – 24





# Make-N-Take Stained Glass Workshop

## Make - N - Take Stained Glass Workshop with Wild Rose Glass

Saturday, May 16, 2026

\$125 per project, up to 2 per group

10:00am – 1:00pm or 2:00pm – 5:00pm



You will learn safety, technique, and go home with a piece you made the very same day! There will be a variety of designs to choose. All supplies are included. However, if you would like to bring your own safety glasses you are welcome to.

**Ages:** Youth are welcome to attend the make-n-take stained glass if they have the interest/motivation to complete their own project. If unsure, you create something together as a family. The cost is per project not per person. It is all about the memories at the end of the day, and we want the kids to enjoy their time. Participants must be at least 10 years old to work solo.

**Difficulty Level:** We understand that some steps may not be as easy for everyone. We are here to educate and guide you through each step. You can do as much or as little of each step as you would like and the instructor will be there to help.

**Duration:** Depending on the group size, the class lasts 2-3 hours.

**Instructor:** Wild Rose Glass

**Date:** Saturday, May 16

**Session 1:** 10:00am – 1:00pm

**Session 2:** 2:00pm – 5:00pm

**Cost:** \$125 per project, up to 2 per group



# Open Studio Workshops

Open Studio Workshops will be offered during both our spring and fall semesters. These workshops are available to those who are interested in sharing their artworks and creative ideas. We intend to provide an open studio space for you to bring your in progress works and create alongside fellow community makers. An instructor will be present to talk about 2D techniques and assist you with problem solving your artwork. You must bring all your own materials, however if you find that you have forgotten a tool or supply, we will do our best to provide that missing item for the duration of the workshop. Walk-ins are welcome and encouraged.

**Cost:** FREE for members, \$10 for non-members

**Instructor:** Alex Chisler

Alexandria “Alex” Chisler is a Greenville based artist who studied at the University of North Carolina School of the Arts in Winston-Salem and at East Carolina University. She has experience in painting (acrylic and gauche mainly), printmaking, illustration, drawing and digital art. In her personal work she focuses on character art, figure drawing, life drawing, still life and botanical abstractions.

**Date:** Tuesday, February 10

**Time:** 6:30pm – 8:00pm

**Reg. Code:** OSW-23

**Date:** Tuesday, March 10

**Time:** 6:30pm – 8:00pm

**Reg. Code:** OSW-24

**Date:** Tuesday, April 14

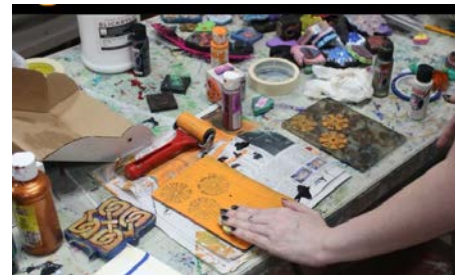
**Time:** 6:30pm – 8:00pm

**Reg. Code:** OSW-25

**Date:** Tuesday, May 12

**Time:** 6:30pm – 8:00pm

**Reg. Code:** OSW-26



## Private Lessons

Private lessons are available in all areas. These hands-on lessons are taught in the one-on-one format with the instructor demonstrating, then letting the student “try it.” Class dates and times are scheduled by the student and instructor’s mutual agreement. Once a schedule is agreed upon, a staff member will email you a form requesting a \$20 non-refundable deposit, which will come out of the total owed on the first day. Depending on the type of lesson, some materials or a material fee may be required. Ask for more information.

Call Paula Rountree at Emerge (252) 551-6947 or e-mail at [paula@emergegallery.com](mailto:paula@emergegallery.com) for more information and to schedule.

**Cost:** \$200 for Emerge members, \$240 for non-members (4 one hour lessons)

Bring a friend: two people \$150 each, three or more \$125 each (Emerge members only)

# Pop In, Pop Art

We offer our Pop In Pop Art workshops one Saturday a month starting at 1:00pm. Community members are able to pop in for a 20-25 minute lesson for \$10. Workshops are available for children as young as age three and adults of all ages. Walk-ins are welcome however pre-registration is encouraged.

**Workshop Times: 1:00pm - 1:25pm**

**1:45pm - 2:10pm**

**2:30pm - 2:55pm**

**Cost: \$10 per person**

## Ceramic Flower Stake

**Ages 3 and up**

These flowers stakes are useful for bees to drink from in your garden! There will be premade slabs that you can cut a flower out of and push a coil through the middle for your stake. You can add a bit of color with underglaze to customize your flower. Participants will return at a later date to pick up their pots after they have been glazed.

**Date: Saturday, February 6**

**Instructor: TBA**

## Seed Bead Earrings

**Ages 6 and up**

Participants will learn techniques to bead and wire wrap a pair of earrings. There will be multiple color beads to choose from for you to customize your earrings. Your wearable jewelry will make a great addition to any outfit or gift for a loved one.

**Date: Saturday, March 7**

**Instructor: Jacque Schacht**

## Ceramic Herb Stripper

**Ages 3 and up**

In this workshop you will learn how to make ceramic tool for harvesting your garden herbs. You will can adorn a premade slab, drill holes, and add a bit of color with underglaze. Participants will return at a later date to pick up their projects after they have been glazed.

**Date: Saturday, April 4**

**Instructor: Erica Tuomi**

## Bottle Cap Magnets

**Ages 3 and up**

Participants will use decorative papers and small objects to collage a tiny design inside the interior of a bottle cap. The image will be glued into place and turned into a decorative magnet.

**Date: Saturday, May 2**

**Instructor: Alex Chisler**



# Technique Workshops

Technique Workshops are available to those who are interested in learning a specific technique in their artform and are looking for assistance in getting there. We hope to offer these workshops in a variety of mediums and would love to hear what you would like to see. Please email [education@emergegallery.com](mailto:education@emergegallery.com) with any suggestions for future workshops.

**Cost:** \$40 for Emerge members, \$60 for non-members

## Sculpting Pottery

(Current students, Firing Circle and Mudhole members only)

During this two-hour workshop participants will learn to refine their sculpting skills. Students are encouraged to attend this workshop with a minimum of three leather hard slabs to sculpt onto. These slabs should be at least 5x5" large and 3/4" thick. They will be finished with a hanging mechanism turning them into wall hanging art. Bring any carving and sculpting tools you own. [Min. 4, Max. 10]

**Date:** Saturday, February 28

**Time:** 10:30am – 12:30pm

**Instructor:** Melissa Gates

**Reg. Code:** TECH - 11



Artwork Sample by  
Melissa Gates

## Carving Pottery

(Current students, Firing Circle and Mudhole members only)

During this two-hour workshop participants will explore the wonderful world of carving into your hand built creation. Students are encouraged to attend this workshop with a minimum of three flat slabs that are leather hard. Students with more carving experience can bring additional bowls if you prefer to carve into functional items. Bring any carving and sculpting tools you own. [Min. 4, Max. 10]

**Date:** Saturday, April 18

**Time:** 10:30am – 12:30pm

**Instructor:** Melissa Gates

**Reg. Code:** TECH - 12



Artwork Sample by  
Melissa Gates

## Handbuilding Critter Creations

(Current students, Firing Circle, and Mudhole members only)

In this workshop, we will explore the process of constructing a clay animal sculpture. The sculpture will be small (approximately 5"x5"x7") and will focus on learning sculptural handbuilding techniques, including pinch and coil methods. Bring photos of your favorite pet or any animal to help guide the creation of your animal's likeness. We will work to imbue your creation with personality. Depending on the level of detail, you may not finish within the allotted time frame of the workshop. [Min. 4, Max. 10]

**Date:** Saturday, May 16

**Time:** 10:30am – 12:30pm

**Instructor:** Charlotte Fitz-Daniels

**Reg. Code:** TECH - 13



Artwork Sample by  
Charlotte Fitz-Daniels



# ArtWalk Workshops

ArtWalk Workshops will be offered during this First Friday ArtWalk. While attending our current exhibitions, please venture back into one of our studios to make your own artwork! Walk-ins are welcome however pre-registration is encouraged.

**Cost:** \$10

## Mandala Stone

**Ages 3 and up**

Come to this workshop and paint a small ceramic stone. We will have multiple forms premade for you to choose from to decorate with underglaze. You will have to return at a later date to pick up your stone after it has been glazed fired.

**Date:** Friday, March 6

**Time:** 5:30pm – 7:30pm

## Paint-A-Pot

**Ages 3 and up**

Come to this workshop and paint a small ceramic pot! We will have multiple forms premade for you to choose from to decorate with underglaze. You will have to return at a later date to pick up your pot after it has been glazed fired.

**Date:** Friday, April 3

**Time:** 5:30pm – 7:30pm

## Pocket Stone

**Ages 3 and up**

Come to this workshop and make small ceramic to fidget with in your pocket. You will learn how to create a pocket stone custom fitting your thumb and then decorate the stone with underglaze. You will have to return at a later date to pick up your stone after it has been glazed fired.

**Date:** Friday, May 1

**Time:** 5:30pm – 7:30pm

## Watercolor Card

**Ages 3 and up**

Participants will be painting a watercolor card with floral subject matter in mind. You will also learn a wax resist technique using crayons to make designs. Inside the card you can hand write a message for any occasion!

**Date:** Friday, June 5

**Time:** 5:30pm – 7:30pm



# Membership Form

## Support Your Local Arts Council and Save!

I would like to sign up for the following:  
(Please check the membership of your choice.)

- |                          |   |
|--------------------------|---|
| <input type="checkbox"/> | <b>Senior 65+/Student</b> (\$25)<br>PCC and ECU students only |
| <input type="checkbox"/> | <b>Individual</b> (\$40)                                      |
| <input type="checkbox"/> | <b>Family</b> (\$65)  |
| <input type="checkbox"/> | <b>Donor</b> (\$150)  |
| <input type="checkbox"/> | <b>Sponsor</b> (\$250)  |
| <input type="checkbox"/> | <b>Patron</b> (\$500)   |
| <input type="checkbox"/> | <b>Benefactor</b> (\$1,000)                                   |

Thank you for your support of Emerge Gallery & Art Center,  
Home of the Pitt County Arts Council.  
Emerge Gallery & Art Center is a 501(c)(3)  
non-profit organization. Your donation is tax deductible.

Date \_\_\_\_\_

Name \_\_\_\_\_

Address \_\_\_\_\_

\_\_\_\_\_

(City) \_\_\_\_\_ (State) \_\_\_\_\_ (Zip) \_\_\_\_\_

Phone \_\_\_\_\_

E-mail \_\_\_\_\_

(This email will be used to create your account.)

If Applicable:

Spouse's Name \_\_\_\_\_

Child(ren)'s Name(s) \_\_\_\_\_

If individual member is under 18:

Parent/Guardian \_\_\_\_\_

Become a part of Emerge Gallery & Art Center and help support this non-profit art center. Members are an active part of Emerge and benefits are growing everyday.  
Memberships are renewed yearly.

### Senior Citizens and College Students \$25

Benefits for Seniors 65 years and older and ECU and PCC students with valid ID include monthly mailings, discounts on classes and workshops for the individual, seasonal newsletter, invitation to members' only events and free admission to select special events.

### Individual \$40

Benefits include monthly mailings, discounts on classes and workshops for the individual, a seasonal newsletter, invitation to members' only events and free admission to select special events.

### Family \$65

Benefits include monthly mailings, discounts on classes and workshops for the immediate family, a seasonal newsletter, invitation to members' only events and free admission to select special events.

### Donor \$150

Benefits include monthly mailings, 5% off sales gallery when mentioned, discounts on classes and workshops for the entire family, a seasonal newsletter, invitation to members' only events and free admission to select special events.

### Sponsor \$250

Benefits include monthly mailings, 10% off in sales gallery when mentioned, discounts on classes and workshops for the entire family, a seasonal newsletter, invitation to members' only events and free admission to select special events.

### Patron \$500

Benefits include monthly mailings, 10% off in sales gallery when mentioned, discounts on classes and workshops for the entire family, a seasonal newsletter, invitation to members' only events, free admission to select special events, and one free two hour rental of the gallery.

### Benefactor \$1,000

Benefits include monthly mailings, 15% off in sales gallery when mentioned, discounts on classes and workshops for the entire family, a seasonal newsletter, invitation to members' only events, free admission to select special events, and one free four hour rental of the gallery.

# Registration Form

Student's First Name: \_\_\_\_\_ Student's Last Name: \_\_\_\_\_  
Address: \_\_\_\_\_ City: \_\_\_\_\_ State: \_\_\_\_\_ Zip: \_\_\_\_\_  
Phone (home): \_\_\_\_\_ Phone (cell): \_\_\_\_\_  
E-Mail: \_\_\_\_\_  
Emergency Contact Information: \_\_\_\_\_  
Relationship: \_\_\_\_\_ Phone: \_\_\_\_\_

Below must be completed if student is under 18 years of age:

Child's Age: \_\_\_\_\_ Birthday: \_\_\_\_\_ Grade: \_\_\_\_\_ School: \_\_\_\_\_

1st Parent/Guardian's Name: \_\_\_\_\_

2nd Parent/Guardian's Name: \_\_\_\_\_

Does your child have any allergies or medical conditions we should be aware of? (Please list below.)

Do you or the participant have a disability and/or require accommodations in order to fully participate? If yes, please indicate what those needs are here: \_\_\_\_\_

Would you like to be contacted to discuss these needs? If yes, what is your preferred method of contact? \_\_\_\_\_

Are you (or your child) a member of the Emerge Gallery & Art Center?: Yes \_\_\_\_\_ No \_\_\_\_\_

Do you agree to Emerge Gallery & Art Center photographing you or your child and using it in promotional materials (web, print, etc) and social media (facebook, twitter, instagram, etc)? Yes \_\_\_\_\_ No \_\_\_\_\_

Class Name:	Registration Code:	Amount:
1.		
2.		

**Waiver of Liability:** In consideration for Emerge Gallery & Art Center making programs available to myself or my child, I hereby release Emerge Gallery & Art Center, its employees, volunteers, instructors, and agents from any and all liability, cost/expense associated with any injury or illness that I or my child may sustain while participating in any of the programs and activities. I voluntarily agree to assume all of the foregoing risks and accept sole responsibility for any injury to myself (including, but not limited to, personal injury, disability, and death), illness, damage, loss, claim, liability, or expense, of any kind, that I may experience or incur in connection with me or my child's attendance at Emerge Gallery & Art Center or participation in Emerge Gallery & Art Center programming. In case I cannot be reached in an Emergency, I give my permission to the Emerge Gallery & Art Center to select proper Emergency care and treatment for my child or myself. Furthermore, I hereby hold Emerge Gallery & Art Center, its employees, volunteers, instructors, and agents harmless for any damage, loss, or claims to my person, child, or property. I understand that payment must be made in full. I agree to the refund policy stated in the class booklet in the event of a refund request. Refunds are possible up to one week prior to class. No refunds 5 days prior.

Signature: \_\_\_\_\_ Date: \_\_\_\_\_

If under 18 years of age must be signature of Parent or Legal Guardian.

## Please remember to mark your calendar!

With questions and/or for enrollment information, please contact Heather Suter, Education Coordinator, at [education@emergegallery.com](mailto:education@emergegallery.com).