

**SPRING 2022**  
**CLASSES & WORKSHOPS**  
**ADULT & YOUTH SCHEDULE: JANUARY - MAY**



**MISSION STATEMENT:**

Emerge Gallery & Art Center is a non-profit organization dedicated to enhancing the quality of life in Pitt County by promoting artists and arts organizations, educating through the arts, and making the arts accessible to the entire community.



**CONTACT US:**

404 Evans Street | Greenville, NC 27858  
 (252) 551-6947  
 info@emergegallery.com | www.emergegallery.com

*Community Outreach*

Part of the Emerge Gallery & Art Center’s mission is to make the arts accessible to the entire community. For every five paid programs, one is completely free. We do this through art programs geared towards those affected by cancer in the hospital, artist in residency programs, and our Youth Arts Initiative program, which includes scholarships and our Youth Public Arts Project.

**Youth Public Arts Project** is our longest running outreach program. Started in 2005, this is a bi-monthly program, where youth come to the arts council to work with professional artists and musicians to create various public art projects and learn about the rich heritage of African American music. The public art is then displayed throughout the community.

**Art is Good Medicine** is an arts in healthcare program in partnership with local healthcare providers Vidant Health. Professional visual artists work with adult and pediatric cancer patients and survivors. In addition, we facilitate weekly art experiences at Hope Lodge and offer free workshops to cancer patients, survivors, family members, and caregivers.

**Scholarships** are available to our community in need to attend classes free of charge.

For more information, please contact Paula Rountree, Programs Director at paula@pittcountyarts.org.

<b>GENERAL INFORMATION</b>	
Community Outreach	PAGE 2
Policies & Procedures	PAGE 3
<b>CLASSES &amp; MORE</b>	
Youth Classes	PAGE 4
Painting & Drawing Classes	PAGE 5
Metal Design & Jewelry Classes	PAGE 6
Bookmaking & Printmaking Classes	PAGE 7
Pottery Clubs	PAGE 7
Pottery Classes	PAGE 8-9
Workshops & Private Lessons	PAGE 10-11
Registration Form	PAGE 12

**FOLLOW US ON SOCIAL MEDIA:**



@PittCountyArtsCouncil



@pittcountyarts



@pittcountyarts





## Registration Procedures

- You must fill out the registration form completely.
- We do not take phone registrations. Register early as space is limited!
- Registration is available via web, mail, or in person at our facility.
- We offer online registration. Please visit [www.emergegallery.com](http://www.emergegallery.com) for more information.
- Registrations may be mailed or delivered in person to: Emerge Gallery & Art Center, 404 Evans St., Greenville, NC 27858
- Mailed registrations will be recorded by date of receipt.
- Payment may be made by check, cash, or credit card.

## Payment & Refund Policies

- Payments must be made in full. Deposits are not accepted!
- There will be NO refunds (full or partial) after 5 days prior to a class.
- Full refunds are available up to 2 weeks in advance, minus the processing fee of \$20.
- Full refunds must be requested in writing via mail, in person, or via email to [paula@emergegallery.com](mailto:paula@emergegallery.com).
- Partial refunds are available after 2 weeks on a sliding scale up to 5 days prior to class and include the deduction of the processing fee of \$20.
- The scale of what Emerge Gallery & Art Center will retain if a cancellation occurs:
  - 12 - 13 days prior - 10% of enrollment plus the \$20 processing fee
  - 10 - 11 days prior - 20% of enrollment plus the \$20 processing fee
  - 8 - 9 days prior - 30% of enrollment plus the \$20 processing fee
  - 7 days prior - 40% of enrollment plus the \$20 processing fee
  - 6 days prior - 50% of enrollment plus the \$20 processing fee
  - 5 days prior - 60% of enrollment plus the \$20 processing fee
  - After 5 days prior – no refund is given
- In the case of emergency, sickness, or similar events, please contact Paula Rountree at Emerge Gallery & Art Center concerning your situation and need of a refund. Each situation is examined on an individual basis. Decisions are made by the Education Committee.
- In the event of any refund, the Emerge Gallery & Art Center will retain a \$20 processing fee.
- Emerge Gallery & Art Center does not offer makeup classes in any form for classes missed due to no fault of our organization. This includes switching classes or sessions.
- A request to switch a registration from one session to another will incur a \$10 processing fee.

## Class Guidelines

- All students, instructors, and staff are encouraged to wear a face mask in the classroom.
- We encourage you to dress for mess. To reduce sharing items, Emerge Gallery & Art Center will not be able to provide aprons. We encourage you to pack your own apron or wear clothes you are ok with getting art on.
- Emerge Gallery & Art Center will offer a Zoom option for a few of the classes. Students must have their own supplies (except for clay, that would have to be purchased through Emerge Gallery & Art Center).
- The in-person class and Zoom class are not interchangeable.
- Emerge Gallery & Art Center asks that if anyone in your household is sick or showing signs of becoming sick, that you do not attend class.

# Youth Classes

## EMERGING ARTISTS: ART FUNDAMENTALS

Grades 1st - 5th (Children taught at a skill and pace level sufficient for their needs.)

Immerse your young artists in the world of abstraction, using lots of shapes, forms, colors, and lines! Students will be introduced to well known artists, in different abstract mediums, to inspire their own works of art. These mediums will cater towards painting, drawing, sketching, mixed media, but possibly more! [Min. 4, Max. 6]

ALL MATERIALS INCLUDED

Cost: \$80 for Emerge members, \$120 for non-members

THURSDAYS, 4:15pm - 5:45pm

Instructor: Kimberly Cusack

Session 1: January 13 - February 17 (6 classes)

Reg. Code: AF-90

Session 2: March 3 - April 14 (6 classes)

Reg. Code: AF-91

\*Skipping the week of March 14.

Session 3: April 21 - May 26 (6 classes)

Reg. Code: AF-92

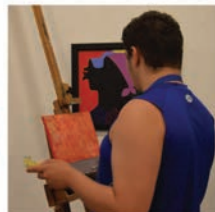
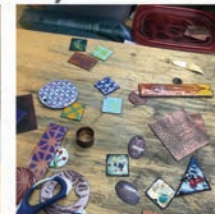


**emerge**

GALLERY &  
ART CENTER

# SPRING BREAK *art camp*

MARCH 14 - 18, 2022



# READY. SET. *Create!*



# Painting & Drawing

## INTRO TO PAINTING, DRAWING & MIXED MEDIA

Do you want to learn to paint or draw? Are you interested in working with mixed media? Would you like to perfect your skills? If so, sign up for this fun class! This open studio style class offers fellowship with other artists interested in painting, drawing, and mixed media while working on great new projects. [Min. 4, Max. 6] Ages 16 and up or by special permission. First day supplies are included. The instructor will provide a supply list at the first class.

**TUESDAYS, 1:00pm - 3:00pm, Instructor:** Gail Ritzer

**Session 1: January 11 - February 15 (6 classes)**

**Reg. Code: PDM-90**

**Session 2: March 1 - April 12 (6 classes)**

**Reg. Code: PDM-91**

**\*Skipping the week of March 14.**

**Session 3: April 19 - May 24 (6 classes)**

**Reg. Code: PDM-92**

**Cost:** \$80 for Emerge members, \$120 for non-members

**Zoom:** \$70 for Emerge members, \$110 for non-members

## DRAWING & PAINTING

Whether it is watercolor, acrylic, oils, charcoal, or graphite that strikes your fancy, we have the class for you! Our classes are small and are taught like several private lessons at once, geared towards your specific interests and subject matter choices. You will learn just as much from your classmates as you will from your instructor. Our class structure is great for beginners or experienced painters and drawers to further their skills! Mediums that can be covered include acrylics, watercolor, oils, graphite, charcoal, pastels, and more! [Min. 4, Max. 6] Ages 16 and up or by special permission.

**TUESDAYS, 6:00pm - 8:30pm, Instructor:** Kimberly Cusack

**Session 1: January 11 - February 15 (6 classes)**

**Reg. Code: PAD-90**

**Session 2: March 1 - April 5 (6 classes)**

**Reg. Code: PAD-91**

**Session 3: April 19 - May 24 (6 classes)**

**Reg. Code: PAD-92**

**THURSDAYS, 6:00pm - 8:30pm, Instructor:** Kimberly Cusack

**Session 1: January 13 - February 17 (6 classes)**

**Reg. Code: PAO-90**

**Session 2: March 3 - April 7 (6 classes)**

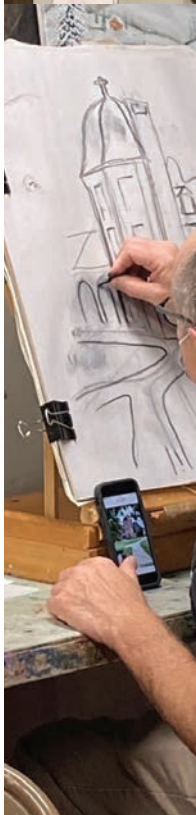
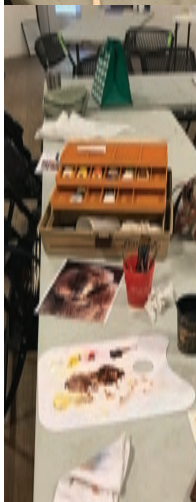
**Reg. Code: PAO-91**

**Session 3: April 21 - May 26 (6 classes)**

**Reg. Code: PAO-92**

**Cost:** \$90 for Emerge members, \$130 for non-members

**Zoom:** \$80 for Emerge members, \$120 for non-members



# Metal Design & Jewelry

## INTRO TO METALSMITHING: "I MADE IT MYSELF"

"I made it myself!" That's what you'll tell friends when they ask about the unique piece of jewelry you're wearing. Learn metalsmithing techniques such as sawing, filing, soldering, and riveting to make a variety of projects. First-time participants will make a bracelet that involves all of these basic methods. Returning participants will work with the instructor to problem solve, refine their basic skills, and explore more advanced techniques such as enameling, etching, alternative materials, and stone setting. [Min. 4, Max. 6]

Ages 16 and up or by special permission. Supplies are included with the exception of fine metals, such as silver, that students may wish to use in class.

### Daytime

**TUESDAYS, 3:00pm - 5:00pm, Instructor: Krista Trotman**

**Session 1: January 11 - February 15 (6 classes) Reg. Code: TMD-90**

**Session 2: March 1 - April 12 (6 classes) Reg. Code: TMD-91**

**\*Skipping the week of March 14.**

**Session 3: April 19 - May 24 (6 classes) Reg. Code: TMD-92**

**THURSDAYS, 3:00pm - 5:00pm, Instructor: Krista Trotman**

**Session 1: January 13 - February 17 (6 classes) Reg. Code: DMD-90**

**Session 2: March 3 - April 14 (6 classes) Reg. Code: DMD-91**

**\*Skipping the week of March 14.**

**Session 3: April 21 - May 26 (6 classes) Reg. Code: DMD-92**

**Cost: \$100 for Emerge members, \$140 for non-members**

### Evening

**TUESDAYS, 6:30pm - 8:30pm, Instructor: Stephen Watson**

**Session 1: January 11 - February 15 (6 classes) Reg. Code: AMD-90**

**Session 2: March 1 - April 5 (6 classes) Reg. Code: AMD-91**

**Session 3: April 19 - May 24 (6 classes) Reg. Code: AMD-92**

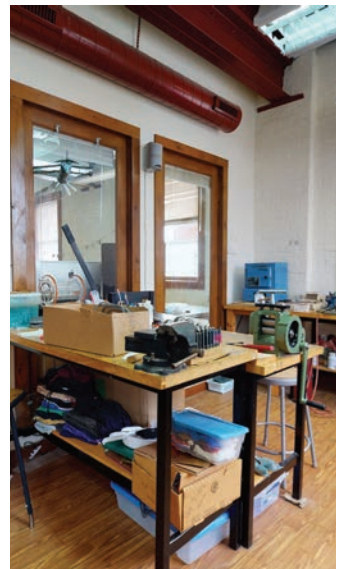
**THURSDAYS, 6:30pm - 8:30pm, Instructor: Stephen Watson**

**Session 1: January 13 - February 17 (6 classes) Reg. Code: IMD-90**

**Session 2: March 3 - April 7 (6 classes) Reg. Code: IMD-91**

**Session 3: April 21 - May 26 (6 classes) Reg. Code: IMD-92**

**Cost: \$100 for Emerge members, \$140 for non-members**





# Bookmaking

## INTRO TO BOOKMAKING

Learn the basics of bookmaking! This course will cover a variety of techniques including sewn bindings, folded structures, and using adhesives. Participants will construct both hard cover and soft cover books, books for journaling and sketching, as well as artist books. Tools and some materials provided. [Min. 4, Max. 6] Ages 16 and up or by special permission. No experience needed.

**WEDNESDAYS, 6:30pm - 8:30pm, Instructor:** Michael Gaines

**Session 1: January 12 - February 16 (6 classes)**

**Reg. Code:** ITB-90

**Session 2: March 2 - April 6 (6 classes)**

**Reg. Code:** ITB-91

**Session 3: April 20 - May 25 (6 classes)**

**Reg. Code:** ITB-92

**Cost:** \$80 for Emerge members, \$120 for non-members

# Printmaking & Mixed Media

## GEL PLATE PAINTING & PRINTING!

Learn how to make colorful art while having fun with this fast and easy hand printing method. All materials are provided. This class is for beginners and for those with more art experience. You will create with printing leaves and other botanical materials, stencils, and with common household objects. Your final creations will make great original hand printed cards and art prints you can frame. [Min. 4, Max. 6] Ages 16 and up with special permission.

General supplies are included, however students are welcome to bring additional supplies.

**WEDNESDAYS, 1:00pm - 3:00pm, Instructor:** Karen Warren

**Session 2: March 2 - April 13 (6 classes)**

**Reg. Code:** GPM-91

**\*Skipping the week of March 14.**

**Session 3: April 20 - May 25 (6 classes)**

**Reg. Code:** GPM-92

**Cost:** \$80 for Emerge members, \$120 for non-members

# Pottery Clubs

Membership to **THE FIRING CIRCLE** and **MUDHOLE** is open to all current and previously enrolled students taking classes through our pottery program. You also have to be approved by the current Pottery Coordinator for admission. If you have not taken a pottery class through Emerge, you must first enroll in the Clay Studio Orientation Class prior to joining a Pottery Club.

## THE FIRING CIRCLE

Members of the Firing Circle are paying only for the use of the kiln facilities. They are not eligible for use of the pottery facility including wheels, tables, equipment, etc. This is simply a club for those individuals who wish to create and work on their artwork off site, but need kiln usage. Clay and glazes are not included. Clay may be purchased at class rates. Clay not purchased at Emerge is not permitted. Dues run on a 6 month basis. Members pay for firing by drying room shelf load (shelves are approximately 12" x 36").

6 Month Membership Rates: \$25 for Emerge members, \$65 for non-members

Firing Rates: \$10 per drying room shelf (*You must place receipt on drying room shelf in order to be fired.*)

## MUDHOLE

Mudhole membership entitles you to use our facilities any time during our open hours, whether you are currently enrolled in a class or not, the ability to purchase clay at class rates, use of glazes, and your work will be fired through our facility. Dues run on a 3 month or a 6 month basis.

3 Month Membership Rates: \$100 for Emerge members, \$140 for non-members

6 Month Membership Rates: \$150 for Emerge members, \$190 for non-members.



# Daytime Clay Classes

## DAYTIME POTTER'S WHEEL

This is the perfect class for those interested in learning and perfecting throwing on the potter's wheel. Intro students will learn the basics of wheel throwing while intermediate and advanced students will work with the instructor on problem solving and refining their skills. [Min. 4, Max. 6]  
Ages 16 and up or by special permission for senior project.

Supply fees for all ceramics classes are \$25 per bag of clay and \$20 for the toolkit.  
All glazes and firing are included.

**TUESDAYS, 10:00am - 12:00pm, Instructor:** Cheyanne Ludlum

**Session 1: January 11 - February 15 (6 classes)**      **Reg. Code: DPW-90**

**Session 2: March 1 - April 12 (6 classes)**      **Reg. Code: DPW-91**

**\*Skipping the week of March 14.**

**Session 3: April 19 - May 24 (6 classes)**      **Reg. Code: DPW-92**

**Cost:** \$80 for Emerge members, \$120 for non-members

## DAYTIME HANDBUILDING

This class will cover handbuilding, glazing techniques, and surface decoration. Students will learn how to make various seasonal projects while learning to use a slab roller, extruder, and other tools. [Min. 4, Max. 6]  
Ages 16 and up or by special permission for senior project.

Supply fees for all ceramics classes are \$25 per bag of clay and \$20 for the toolkit.  
All glazes and firing are included.

**THURSDAYS, 1:00pm - 3:00pm, Instructor:** Gail Ritzer

**Session 1: January 13 - February 17 (6 classes)**      **Reg. Code: THB-90**

**Session 2: March 3 - April 14 (6 classes)**      **Reg. Code: THB-91**

**\*Skipping the week of March 14.**

**Session 3: April 21 - May 26 (6 classes)**      **Reg. Code: THB-92**

**Cost:** \$80 for Emerge members, \$120 for non-members

## African American Music Series



Join us on the second Friday of each month for a free concert!

Presented by:



# First Flight

A special thank you to our sponsors:



North Carolina Arts Council  
Fifty years of leadership



GREENVILLE-PITT COUNTY CONVENTION & VISITORS BUREAU  
Find yourself in good company\*



COLLEGE OF FINE ARTS AND COMMUNICATION



CVD Productions

Christie Martin and  
Randall Martoccia



# Evening Clay Classes

## HANDBUILDING: TO FUNCTION, OR NOT TO FUNCTION?

This class will focus on introducing handbuilding techniques including slab building, coiling, and pinch pots. You can use these techniques to make something sculptural or something functional to take home. Some previous experience with clay is preferred but not necessary. If you have already taken the Intro to Pottery class and wish to learn about combining your wheel thrown items with some handbuilding techniques, then this class is also for you, however you should be skilled enough to throw on your own. [Min. 4, Max. 6]  
Ages 16 and up with special permission.

Supply fees for all ceramics classes are \$25 per bag of clay and \$20 for the toolkit.  
All glazes and firing are included.

**TUESDAYS, 6:00pm - 8:30pm, Instructor:** Charlotte Fitz-Daniels (sessions 1 & 2) Haley McElroy (session 3)  
**Session 1: January 11 - February 15 (6 classes) Reg. Code: ACT-90**  
**Session 2: March 1 - April 5 (6 classes) Reg. Code: ACT-91**  
**Session 3: April 19 - May 24 (6 classes) Reg. Code: ACT-92**

Cost: \$90 for Emerge members, \$130 for non-members

## CONTINUING POTTER: BEYOND THE BASICS

Continuing students will hone their skills at centering, opening, and pulling during this 6 week class. Projects are designed to help improve the fundamentals necessary for crafting advanced cylinders and bowls. Advanced skills such as increasing scale, pulling spouts, and attaching handles will be addressed to challenge potters who have more wheel experience. Each project will include glazing and surface decoration discussions. This class is project driven and will allow students to take home several functional pieces! Introduction to Wheel Throwing is a prerequisite to this class. [Min. 4, Max. 6]  
Ages 16 and up or by special permission for senior project.

Supply fees for all ceramics classes are \$25 per bag of clay and \$20 for the toolkit. All glazes and firing are included.

**WEDNESDAYS, 6:00pm - 8:30pm**  
**Instructor:** TRae Koenig (1&2), TBA (3)  
**Session 1: January 12 - February 16 (6 classes) Reg. Code: CPW-90**  
**Session 2: March 2 - April 6 (6 classes) Reg. Code: CPW-91**  
**Session 3: April 20 - May 25 (6 classes) Reg. Code: CPW-92**

Cost: \$90 for Emerge members,  
\$130 for non-members

## INTRO TO WHEEL THROWING

If you've never tried the potter's wheel but have always wanted to, then this class is for you. If you've thrown on the wheel before but need a refresher or are new to Emerge, then this class is for you too! During this introductory class, you will learn the fundamentals necessary for throwing cylinders and bowls. The session will focus on techniques for centering, opening, pulling, trimming, and glazing; and, by the end of the session, students will have several finished pots to take home. Class size is restricted so students can get the technical instruction required to establish a good foundation for continued learning. This class is a prerequisite for continuing pottery classes. [Min. 4, Max. 6]  
Ages 16 and up or by special permission for senior project.

Supply fees for all ceramics classes are \$25 per bag of clay and \$20 for the toolkit. All glazes and firing are included.

**THURSDAYS, 6:00pm - 8:30pm**  
**Instructor:** Rae Koenig (1&2), Savannah Yates (3)  
**Session 1: January 13 - February 17 (6 classes) Reg. Code: IWT-90**  
**Session 2: March 3 - April 7 (6 classes) Reg. Code: IWT-91**  
**Session 3: April 21 - May 26 (6 classes) Reg. Code: IWT-92**

Cost: \$100 for Emerge members,  
\$140 for non-members



# Sip, Savor & Create Workshops

Make plans to join us for Emerge's adult workshop series that uses artistic fun as a great excuse to have a night out! Grab your friends and join us for a wonderful art project while enjoying a glass of wine! No experience is necessary, but a willingness to have fun is!

All supplies are included. Please feel free to bring a beverage of your choice.

\*Must be 21 or over to register.  
(Beer and wine are welcome. No liquor please.)

**We provide:**  
All the art supplies  
A great art instructor

**You need to bring:**  
You! Friends!  
Beer or wine if you wish.

## ADDITIONAL WORKSHOP INFORMATION

Emerge Gallery & Art Center is still requiring mask for everyone, regardless of vaccination status. We understand that enjoying an adult beverage, or any beverage for that matter, is challenging while wearing a mask. For these situations we ask that you pull down your mask for sipping and place it gently back over your nose and mouth. We will have the room set up in a way that allows you to seat near your pod (if you are coming with one, please note on your form).

**In-Person Class Cost:** \$40 for Emerge members, \$50 for non-members.

---

## ENAMELED JEWELRY

In this workshop, you will be exposed to a variety of enameling techniques to create colorful wearable jewelry. Enameling is a process of fusing powdered glass to metal by firing in a small kiln. Enamel jewelry is a perfect way to add color and even an artistic look to your piece without the need for gemstones. [Min. 4, Max. 6]

**Date:** Friday, January 21  
**Time:** 6:30pm - 8:30pm  
**Reg. Code:** WND-85  
**Instructor:** Krista Trotman

## GEL PLATE PAINTING & PRINTING

Learn how to make colorful art while having fun with this fast and easy hand printing method. All materials are provided. This class is for beginners and for those with more art experience. You will create with printing leaves and other botanical materials, stencils, and with common household objects. Your final creations will make great original hand printed cards and art prints you can frame. [Min. 4, Max. 6]

**Date:** Saturday, February 19  
**Time:** 1:00pm - 3:00pm  
**Reg. Code:** WND-86  
**Instructor:** Karen Warren





## HANDBUILDING

Potters are able to model, squeeze, squish, roll, and even pound on clay making it a therapeutic tool and a fun sensory playground. Destress, create, and explore with one of our Pottery Instructors to form a large bowl and decorate its surface. Feel free to bring some small items from home you think would make a great texture or imprint in the clay. [Min. 4, Max. 6]

**Date:** Friday, March 18  
**Time:** 6:30pm - 8:30pm  
**Reg. Code:** WND-87  
**Instructor:** Haley McElroy

## FELTING

Curious about needle felting? Needle felting is the art of sculpting wool with special barbed needles. Stabbing the wool repeatedly meshes the wool fibers together, creating a firm, textile object. Needle felting is an ideal craft, because it has a quick learning curve, requires minimal supplies and can be done almost anywhere. Join us for this 2-hour "Try It!" workshop. Using wool roving (un-spun wool) in many colors plus a needle felting tool, you'll make beads that can be strung as a necklace or decorative garland. [Min. 4, Max. 6]

**Date:** Friday, April 15  
**Time:** 6:30pm - 8:30pm  
**Reg. Code:** WND-88  
**Instructor:** Sarah Lazure

## POTTER'S WHEEL

Come visit our studio to center clay and help center yourself! It's been a tough week, so sign up to have a creative release while enjoying friends and glass of wine at Emerge. This is a great opportunity to try out the potter's wheel and maybe find a new hobby you will enjoy. [Min. 4, Max. 6]

**Date:** Friday, May 20  
**Time:** 6:30pm - 8:30pm  
**Reg. Code:** WND-89  
**Instructor:** TBA

## Private Lessons



Private lessons are available in all areas. These hands-on lessons are taught in the one-on-one format with the instructor demonstrating, then letting the student "try it". Class dates and times are scheduled by the student and instructor's mutual agreement.

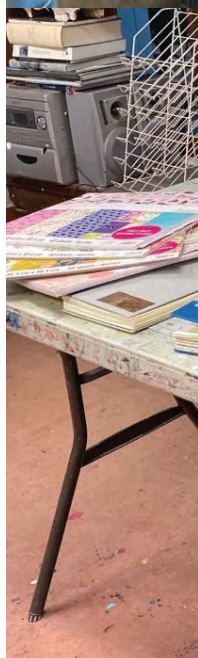
Call Heather Suter at Emerge (252) 551-6947 or e-mail at [education@emergegallery.com](mailto:education@emergegallery.com) for more information and to schedule.

Cost: \$150 for members, \$190 for non-members (4 one hour lessons)  
Bring a friend: two people for \$100 each, three or more \$75 each - 4 one hour lessons (members only)

Need only one lesson?

Schedule by the hour – one person for \$40 an hour, two or more people \$35 an hour per person (members only)

Depending on the type of lesson, some materials or a material fee may be required. Ask for more information.





# Registration Form

Student's First Name: \_\_\_\_\_ Student's Last Name: \_\_\_\_\_

Address: \_\_\_\_\_ City: \_\_\_\_\_ State: \_\_\_\_\_ Zip: \_\_\_\_\_

Phone (home): \_\_\_\_\_ Phone (cell): \_\_\_\_\_

E-Mail: \_\_\_\_\_

Emergency Contact Information: \_\_\_\_\_

Relationship: \_\_\_\_\_ Phone: \_\_\_\_\_

List any medical conditions/special needs that might limit abilities:

\_\_\_\_\_

Below Must Be Completed if Student is Under 18 Years of Age:

Child's Age: \_\_\_\_\_ Child's Birthday: \_\_\_\_\_ Child's Grade: \_\_\_\_\_ Child's School: \_\_\_\_\_

1st Parent/Guardians Name: \_\_\_\_\_

2nd Parent/Guardian's Name: \_\_\_\_\_

Does your child have any allergies or medical conditions we should be aware of? (Please list)

Please note for classes or workshops inclusive of snacks, we do not serve any snack that includes peanuts, nuts, or nut by-products, however, many items are made in facilities that do process these items. If your child has food allergies and is participating in a class or workshop that includes snack, please provide it for them.

Are you (or your child) a member of the Pitt County Arts Council?: Yes \_\_\_\_\_ No \_\_\_\_\_

Do you agree to Emerge Gallery & Art Center photographing you or your child and using it in promotional materials (web, print, etc) and social media (facebook, twitter, instagram etc)? Yes \_\_\_\_\_ No \_\_\_\_\_

Class Name:	Registration Code:	Amount:
1.		
2.		

**WAIVER OF LIABILITY:** In consideration for Emerge Gallery & Art Center making programs available to myself or my child, I here-by release Emerge Gallery & Art Center, its employees, volunteers, instructors, and agents from any and all liability, cost/expense associated with any injury or illness that I or my child may sustain while participating in any of the programs and activities. I voluntarily agree to assume all of the foregoing risks and accept sole responsibility for any injury to myself (including, but not limited to, personal injury, disability, and death), illness, damage, loss, claim, liability, or expense, of any kind, that I may experience or incur in connection with me or my child's attendance at Emerge Gallery & Art Center or participation in Emerge Gallery & Art Center programming. In case I cannot be reached in an Emergency, I give my permission to the Emerge Gallery & Art Center to select proper Emergency care and treatment for my child or myself. Furthermore, I hereby hold Emerge Gallery & Art Center, its employees, volunteers, instructors, and agents harmless for any damage, loss, or claims to my person, child, or property. I understand that payment must be made in full and there will be no refunds of money, either full or partial, after the first day of class. I understand there will be a \$20 non-refundable processing fee in the event of a refund. Refunds are possible up to one week prior to class. No refunds 5 days prior.

Signature: \_\_\_\_\_ Date: \_\_\_\_\_

If under 18 years of age must be signature of Parent or Legal Guardian

### Please Remember to Mark your Calendar!

With questions and/or for enrollment information, please contact Heather Suter, Education Coordinator, at [education@emergegallery.com](mailto:education@emergegallery.com).